

SPRECHER + SCHUH CA7 CONTACTORS SERIES

Over 100 years of design experience has produced Sprecher + Schuh's seventh generation contactor line. The CA7 represents the most modern and flex power contactor available today, meeting the highest industrial application requirements.

Big Performance In A Small Package

A wide selection of contactors in four frame sizes cover the entire CA7 horsepower range (up to 75HP 460/575V). Six of the contactors are only 45mm wide an extremely small footprint for such rugged performance. A number of Design features account for this efficiency including high contact pressure and "bounce-free" contacts, allowing the devices to handle the high starting currents typical of modern motors.

Type 1 and Type 2 Coordination

Whether you're designing motor circuits for use in North America, Europe or any other part of the world, all CA7 contactors have been designed and tested with respect to Type 1 and Type 2 short circuit coordination.

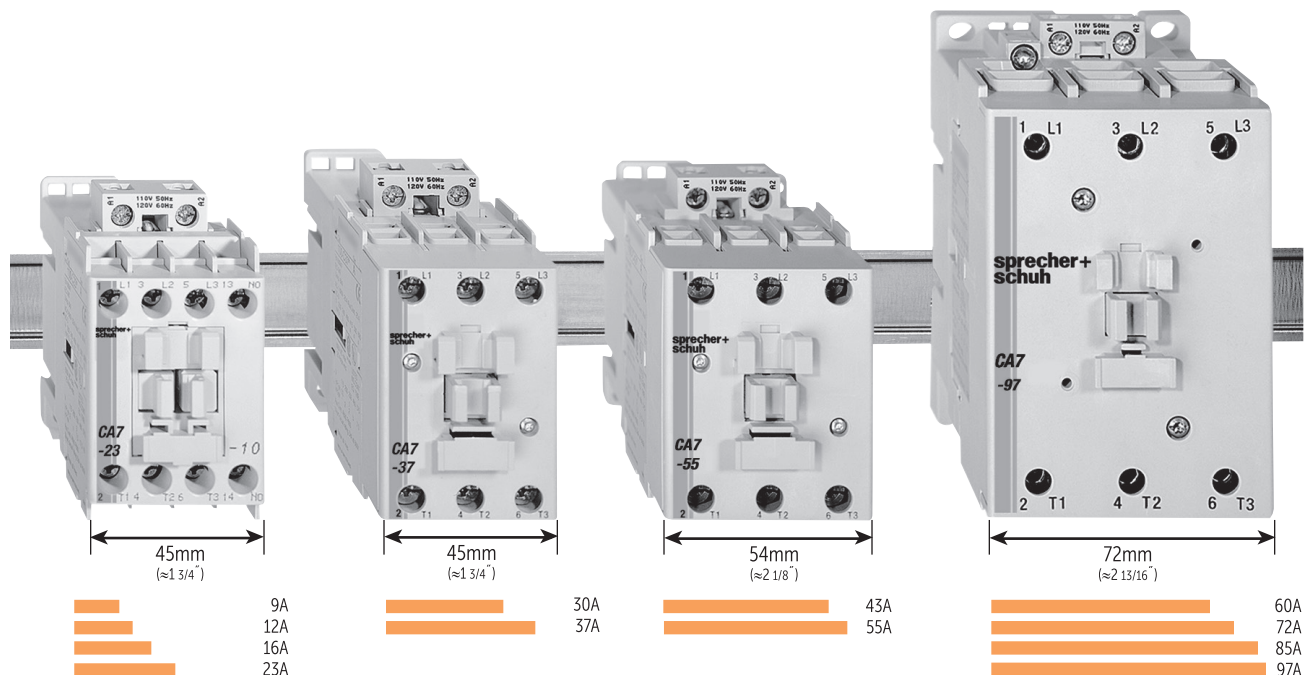
Advanced safety and reliability features

The entire CA7 line features mechanically linked contacts, sometimes referred to as "positively guided contacts" or "force guided contacts". If a main power pole welds, adequate clearances exist ($\geq 0.3\text{mm}$) to ensure that the auxiliary contacts do not change state when coil power is removed and the device tries to open. This is a requirement in safety circuits per IEC 60947-5-1.

Reliability is further assured by "crosstamped" auxiliary contacts, which provide multi-point reliability in low current, low voltage applications.

Advantages of Electronic DC Coil

CA7-9E through CA7-55E are provided with DC coils that dramatically decrease wattage consumption during pull-in. This allows the use of smaller power supplies. The electronic DC coil design allows the height of the contactor to be the same size as the AC version. Larger CA7 contactors are available with a two-winding DC coil that also reduces the size of the contactor as well as the hold-in values.

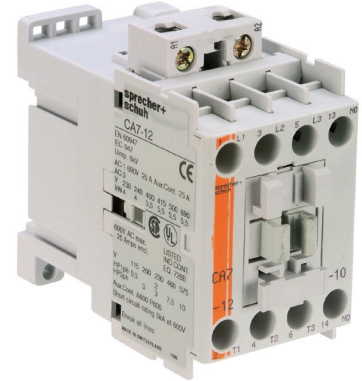


Note: Product photos are for reference only.

SPRECHER + SCHUH CONTACTORS & ACCESSORIES

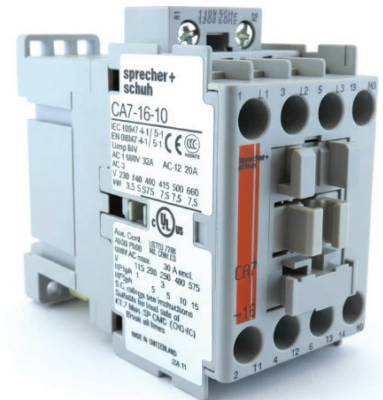
12A 3 Pole AC Contactors

MEGA Stock Code	Amperage	Control Voltage	Auxiliary Contacts
CA7-12-01-24Z	12A	24V AC	1 NC
CA7-12-01-120	12A	120V AC	1 NC
CA7-12-01-220W	12A	220V AC	1 NC
CA7-12-01-480	12A	480V AC	1 NC
CA7-12-10-24Z	12A	24V AC	1 NO
CA7-12-10-120	12A	120V AC	1 NO
CA7-12-10-220W	12A	220V AC	1 NO
CA7-12-10-480	12A	480V AC	1 NO



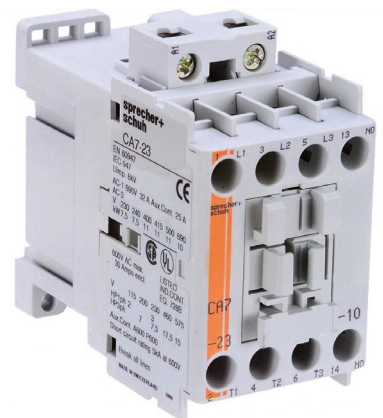
16A 3 Pole AC Contactors

MEGA Stock Code	Amperage	Control Voltage	Auxiliary Contacts
CA7-16-01-24Z	16A	24V AC	1 NC
CA7-16-01-120	16A	120V AC	1 NC
CA7-16-01-220W	16A	220V AC	1 NC
CA7-16-01-480	16A	480V AC	1 NC
CA7-16-10-24Z	16A	24V AC	1 NO
CA7-16-10-120	16A	120V AC	1 NO
CA7-16-10-220W	16A	220V AC	1 NO
CA7-16-10-480	16A	480V AC	1 NO



23A 3 Pole AC Contactors

MEGA Stock Code	Amperage	Control Voltage	Auxiliary Contacts
CA7-23-01-24Z	23A	24V AC	1 NC
CA7-23-01-120	23A	120V AC	1 NC
CA7-23-01-220W	23A	220V AC	1 NC
CA7-23-01-480	23A	480V AC	1 NC
CA7-23-10-24Z	23A	24V AC	1 NO
CA7-23-10-120	23A	120V AC	1 NO
CA7-23-10-220W	23A	220V AC	1 NO
CA7-23-10-480	23A	480V AC	1 NO



Note: Product photos are for reference only.

30A 3 Pole AC Contactors

MEGA Stock Code	Amperage	Control Voltage	Auxiliary Contacts
CA7-30-10-24Z	30A	24V AC	1 NO
CA7-30-10-120	30A	120V AC	1 NO
CA7-23-10-220W	30A	220V AC	1 NO
CA7-23-10-480	30A	480V AC	1 NO



37A 3 Pole AC Contactors

MEGA Stock Code	Amperage	Control Voltage	Auxiliary Contacts
CA7-37-10-24Z	37A	24V AC	1 NO
CA7-37-10-120	37A	120V AC	1 NO
CA7-37-10-220W	37A	220V AC	1 NO
CA7-37-10-480	37A	480V AC	1 NO



43A 3 Pole AC Contactors

MEGA Stock Code	Amperage	Control Voltage	Auxiliary Contacts
CA7-43-10-24Z	43A	24V AC	1 NO
CA7-43-10-120	43A	120V AC	1 NO
CA7-43-10-220W	43A	220V AC	1 NO
CA7-43-10-480	43A	480V AC	1 NO



55A 3 Pole AC Contactors

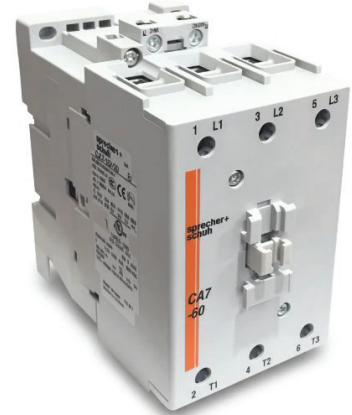
MEGA Stock Code	Amperage	Control Voltage	Auxiliary Contacts
CA7-55-10-24Z	55A	24V AC	1 NO
CA7-55-10-120	55A	120V AC	1 NO
CA7-55-10-220W	55A	220V AC	1 NO
CA7-55-10-480	55A	480V AC	1 NO



Note: Product photos are for reference only.

60A 3 Pole AC Contactors

MEGA Stock Code	Amperage	Control Voltage	Auxiliary Contacts
CA7-60-10-24Z	60A	24V AC	1 NO
CA7-60-10-120	60A	120V AC	1 NO
CA7-60-10-220W	60A	220V AC	1 NO
CA7-60-10-480	60A	480V AC	1 NO



72A 3 Pole AC Contactors

MEGA Stock Code	Amperage	Control Voltage	Auxiliary Contacts
CA7-72-10-24Z	72A	24V AC	1 NO
CA7-72-10-120	72A	120V AC	1 NO
CA7-72-10-220W	72A	220V AC	1 NO
CA7-72-10-480	72A	480V AC	1 NO



85A 3 Pole AC Contactors

MEGA Stock Code	Amperage	Control Voltage	Auxiliary Contacts
CA7-85-10-24Z	85A	24V AC	1 NO
CA7-85-10-120	85A	120V AC	1 NO
CA7-85-10-220W	85A	220V AC	1 NO
CA7-85-10-480	85A	480V AC	1 NO



97A 3 Pole AC Contactors

MEGA Stock Code	Amperage	Control Voltage	Auxiliary Contacts
CA7-97-10-24Z	97A	24V AC	1 NO
CA7-97-10-120	97A	120V AC	1 NO
CA7-97-10-220W	97A	220V AC	1 NO
CA7-97-10-480	97A	480V AC	1 NO



Note: Product photos are for reference only.

12A Reversing 3 Pole AC Contactors

MEGA Stock Code	Amperage	Control Voltage	Auxiliary Contacts
CAU7-12-22-24Z	12A	24V AC	2 NO + 2 NC
CAU7-12-22-120	12A	120V AC	2 NO + 2 NC
CAU7-12-22-220W	12A	220V AC	2 NO + 2 NC
CAU7-12-22-480	12A	480V AC	2 NO + 2 NC



23A Reversing 3 Pole AC Contactors

MEGA Stock Code	Amperage	Control Voltage	Auxiliary Contacts
CAU7-23-22-24Z	23A	24V AC	2 NO + 2 NC
CAU7-23-22-120	23A	120V AC	2 NO + 2 NC
CAU7-23-22-220W	23A	220V AC	2 NO + 2 NC
CAU7-23-22-480	23A	480V AC	2 NO + 2 NC



37A Reversing 3 Pole AC Contactors

MEGA Stock Code	Amperage	Control Voltage	Auxiliary Contacts
CAU7-37-22-24Z	37A	24V AC	2 NO + 2 NC
CAU7-37-22-120	37A	120V AC	2 NO + 2 NC
CAU7-37-22-220W	37A	220V AC	2 NO + 2 NC
CAU7-37-22-480	37A	480V AC	2 NO + 2 NC



55A Reversing 3 Pole AC Contactors

MEGA Stock Code	Amperage	Control Voltage	Auxiliary Contacts
CAU7-55-22-24Z	55A	24V AC	2 NO + 2 NC
CAU7-55-22-120	55A	120V AC	2 NO + 2 NC
CAU7-55-22-220W	55A	220V AC	2 NO + 2 NC
CAU7-55-22-480	55A	480V AC	2 NO + 2 NC



Note: Product photos are for reference only.

60A Reversing 3 Pole AC Contactors

MEGA Stock Code	Amperage	Control Voltage	Auxiliary Contacts
CAU7-60-22-24Z	60A	24V AC	2 NO + 2 NC
CAU7-60-22-120	60A	120V AC	2 NO + 2 NC
CAU7-60-22-220W	60A	220V AC	2 NO + 2 NC
CAU7-60-22-480	60A	480V AC	2 NO + 2 NC



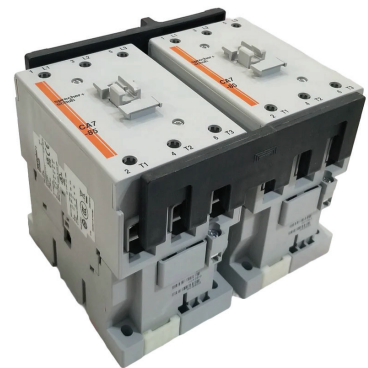
72A Reversing 3 Pole AC Contactors

MEGA Stock Code	Amperage	Control Voltage	Auxiliary Contacts
CAU7-72-22-24Z	72A	24V AC	2 NO + 2 NC
CAU7-72-22-120	72A	120V AC	2 NO + 2 NC
CAU7-72-22-220W	72A	220V AC	2 NO + 2 NC
CAU7-72-22-480	72A	480V AC	2 NO + 2 NC



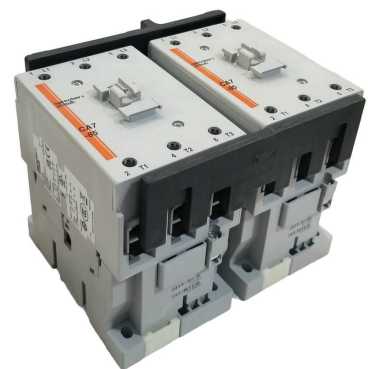
85A Reversing 3 Pole AC Contactors

MEGA Stock Code	Amperage	Control Voltage	Auxiliary Contacts
CAU7-85-22-24Z	85A	24V AC	2 NO + 2 NC
CAU7-85-22-120	85A	120V AC	2 NO + 2 NC
CAU7-85-22-220W	85A	220V AC	2 NO + 2 NC
CAU7-85-22-480	85A	480V AC	2 NO + 2 NC



97A Reversing 3 Pole AC Contactors

MEGA Stock Code	Amperage	Control Voltage	Auxiliary Contacts
CAU7-97-22-24Z	97A	24V AC	2 NO + 2 NC
CAU7-97-22-120	97A	120V AC	2 NO + 2 NC
CAU7-97-22-220W	97A	220V AC	2 NO + 2 NC
CAU7-97-22-480	97A	480V AC	2 NO + 2 NC



Note: Product photos are for reference only.

12A 4 Pole AC Contactors

MEGA Stock Code	Amperage	Control Voltage	Main Pole Configuration
CA7-12-M22-24Z	12A	24V AC	2 NO + 2 NC
CA7-12-M22-120	12A	120V AC	2 NO + 2 NC
CA7-12-M22-220W	12A	220V AC	2 NO + 2 NC
CA7-12-M22-480	12A	480V AC	2 NO + 2 NC
CA7-12-M31-24Z	12A	24V AC	3 NO + 1 NC
CA7-12-M31-120	12A	120V AC	3 NO + 1 NC
CA7-12-M31-220W	12A	220V AC	3 NO + 1 NC
CA7-12-M31-480	12A	480V AC	3 NO + 1 NC
CA7-12-M40-24Z	12A	24V AC	4 NO
CA7-12-M40-120	12A	120V AC	4 NO
CA7-12-M40-220W	12A	220V AC	4 NO
CA7-12-M40-480	12A	480V AC	4 NO



23A 4 Pole AC Contactors

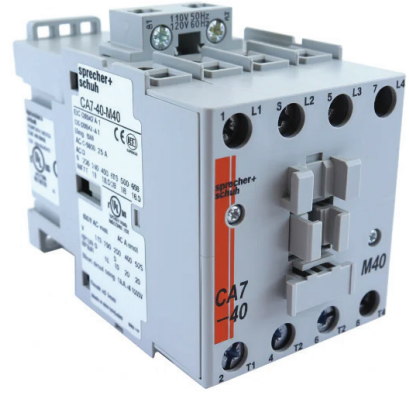
MEGA Stock Code	Amperage	Control Voltage	Main Pole Configuration
CA7-23-M22-24Z	23A	24V AC	2 NO + 2 NC
CA7-23-M22-120	23A	120V AC	2 NO + 2 NC
CA7-23-M22-220W	23A	220V AC	2 NO + 2 NC
CA7-23-M22-480	23A	480V AC	2 NO + 2 NC
CA7-23-M31-24Z	23A	24V AC	3 NO + 1 NC
CA7-23-M31-120	23A	120V AC	3 NO + 1 NC
CA7-23-M31-220W	23A	220V AC	3 NO + 1 NC
CA7-23-M31-480	23A	480V AC	3 NO + 1 NC
CA7-23-M40-24Z	23A	24V AC	4 NO
CA7-23-M40-120	23A	120V AC	4 NO
CA7-23-M40-220W	23A	220V AC	4 NO
CA7-23-M40-480	23A	480V AC	4 NO



Note: Product photos are for reference only.

40A 4 Pole AC Contactors

MEGA Stock Code	Amperage	Control Voltage	Main Pole Configuration
CA7-40-M22-24Z	40A	24V AC	2 NO + 2 NC
CA7-40-M22-120	40A	120V AC	2 NO + 2 NC
CA7-40-M22-220W	40A	220V AC	2 NO + 2 NC
CA7-40-M22-480	40A	480V AC	2 NO + 2 NC
CA7-40-M40-24Z	40A	24V AC	4 NO
CA7-40-M40-120	40A	120V AC	4 NO
CA7-40-M40-220W	40A	220V AC	4 NO
CA7-40-M40-480	40A	480V AC	4 NO



90A 4 Pole AC Contactors

MEGA Stock Code	Amperage	Control Voltage	Main Pole Configuration
CA7-90-M22-24Z	90A	24V AC	2 NO + 2 NC
CA7-90-M22-120	90A	120V AC	2 NO + 2 NC
CA7-90-M22-220W	90A	220V AC	2 NO + 2 NC
CA7-90-M22-480	90A	480V AC	2 NO + 2 NC
CA7-90-M40-24Z	90A	24V AC	4 NO
CA7-90-M40-120	90A	120V AC	4 NO
CA7-90-M40-220W	90A	220V AC	4 NO
CA7-90-M40-480	90A	480V AC	4 NO



Note: Product photos are for reference only.

CA7 Series Auxiliary Contacts

MEGA Stock Code	Contacts Configuration	Mounting Style
CS7-PV-02	2 NC	Front
CS7-PV-04	4 NC	Front
CS7-PV-11	1 NC + 1 NO	Front
CS7-PV-13	1 NO + 3 NC	Front
CS7-PV-20	2 NO	Front
CS7-PV-22	2 NO + 2 NC	Front
CS7-PV-31	3 NO + 1NC	Front
CS7-PV-40	4 NO	Front



CA7 Series Auxiliary Contacts

MEGA Stock Code	Contacts Configuration	Mounting Style
CA7-PA-01	1 NC	Side
CA7-PA-10	1 NO	Side
CA7-PA-02	2 NC	Side
CA7-PA-11	1 NC + 1 NO	Side
CA7-PA-20	2 NO	Side



CA7 Series Mechanical Interlock

MEGA Stock Code	Compatible Contactor	Auxiliary Contacts
CM7-02	All CA7	2NC



Note: Product photos are for reference only.

CEP7 Direct Mount Solid State Overload

MEGA Stock Code	Contacts Configuration	Amperage Range
CEP7-1EFCB	CA7-9, 12, 16, 23	1.0 - 5.0 A
CEP7-1EFEB	CA7-9, 12, 16, 23	5.4 - 27.0 A
CEP7-1EFFD	CA7-30, 37, 43, 50	11 - 55 A
CEP7-1EFGE	CA7-60, 72, 85, 97	20 - 100 A



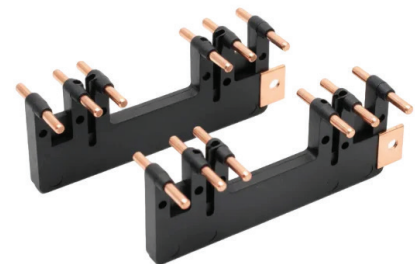
CEP7 Separate Mount Overload Base

MEGA Stock Code	Compatible Overload
CEP7-1EPB	CEP7-1EFCB
CEP7-1EPB	CEP7-1EFEB
CEP7-1EPD	CEP7-1EFFD
CEP7-1EPE	CEP7-1EFGE



CA7 Series Reversing Power Mounting Kit

MEGA Stock Code	Compatible Contactor
CAUT7-PW23	CA7 9 , 12 , 16 , 23
CAUT7-PW37	CA7 30 , 37
CAUT7-PW55	CA7 43 , 55
CAUT7-PW85	CA7 60, 72, 85, 97



Note: Product photos are for reference only.