

Top of Car Safety Rails

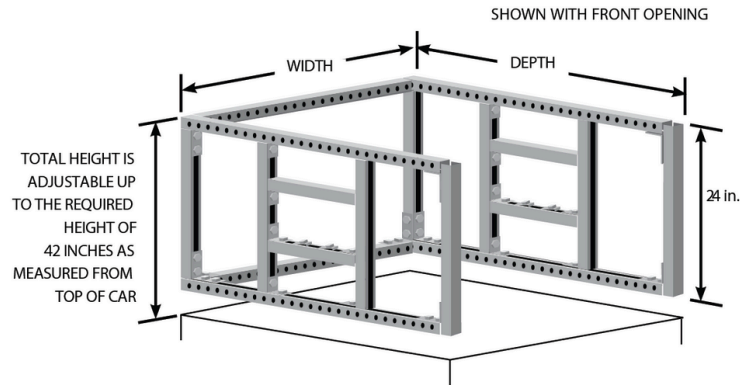
BIG-TOC and LIL-TOC (Top Of Car) safety rail kits install on top of freight and passenger traction elevators to create a safer and more secure car-top environment for both people and their tools. These permanent guardrail kits are easy to install and quickly adjust to the required size.

They are adaptable to both front-opening and front-and-rear opening car types. All rails, bolts, nuts and hardware are included. The major siderail components come pre-assembled. Installation generally takes under an hour. The toe board is ordered separately and serves as an added measure to prevent the loss of tools and other important items.

Determining Width and Depth Requirements for Your TOC Safety Rail Kit

- **Width** – The distance between the roller guide plates determines width, because the TOC side rails mount inside the roller guide plates.
- **Depth** – Measure the inside car depth.
- **Height** – Height is adjustable and is measured from the top of the car to the top handrail of the installed TOC safety rail kit.

NOTE: If clearance between the top of the car and the bottom of the crosshead is less than 18", please call for assistance.



MEGA Stock Code	Toe-board Part Number	Style	Opening	Width (in)	Depth (in)	Weight (lbs)
100-01	100-01TB	LIL-TOC	Front	57 > 82	57 > 82	148
100-03	100-03TB	BIG-TOC 60	Front	69 > 118	69 > 118	184
100-05	100-05TB	BIG-TOC 72	Front	69 > 118	81 > 130	192
100-13	100-13TB	LIL-TOC	Front	45 > 70	69 > 106	158
100-15	100-15TB	LIL-TOC	Front	57 > 82	69 > 106	162
100-17	100-17TB	LIL-TOC	Front	57 > 82	45 > 70	141
100-07	100-07TB	LIL-TOC F&R	Front and Rear	n/a	57 > 82	116
100-09	100-09TB	BIG-TOC 60 F&R	Front and Rear	n/a	69 > 118	142
100-11	100-11TB	BIG-TOC 72 F&R	Front and Rear	n/a	81 > 130	149

Note: Product photos are for reference only.

KE Terminal Limit Switch

How It Works

A magnetically activated cartop-mounted switch array is teamed with rail-mounted actuating magnets to provide consistent bi-directional signals that bring out the best in today's microprocessor-based controls.

Maintenance Free

KE Terminal Limit Switches are reliable, accurate and require no maintenance. Break free from bulky and noisy mechanical cams and switches and the maintenance they require.

Advantages

- Cartop mounting eliminates hoistway rewiring by using available traveling cable conductors
- Straightforward installation on cartop
- Non-contact, noiseless operation—silent inside the car, even on the cartop!
- Rugged, durable switch technology was developed to sense high-speed bullet train position
- Consistent activation flight after flight, year after year
- Set & Forget design requires no adjustment or maintenance once installed
- Better price point than competitive magnetic switches



Many Uses

- Normal terminal slowdown device
- Emergency terminal stopping device
- Speed-limiting device
- Access limit switch
- Earthquake car-to-counterweight switch
- Not for final limits, which must be mechanical per code

MEGA Stock Code	Car Speed	Configuration
KE-8	0 fpm to 350 fpm	Eight switches, eight lanes
KE-14	350 fpm to 1400 fpm	14 switches, 14 lanes

Note: Product photos are for reference only.

HatchLatch® Electromechanical Door Restrictor

HatchLatch® comes standard with all the material you need to protect one elevator up to five floors. To protect more than 5 floors, order additional reflective tape (see table below).

Reflective Tape

You position pieces of reflective tape in the hatchway inside the landing zone and on the door operator.

First Photoeye

When the first of the two HatchLatch photoeyes "sees" the tape in the hoistway, it senses that the elevator is inside the landing zone.

Second Photoeye

When the second HatchLatch photoeye "sees" the tape on the door operator, it picks up a solenoid-controlled plunger.

Plunger

The plunger rises out of the way, clearing the door roller or blocking bracket as the door opens.

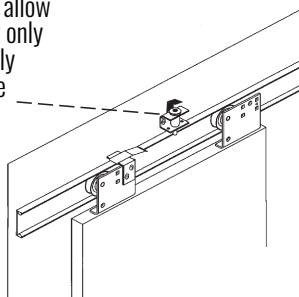
No Exit! Zone

Between landing zones, the photoeye senses no tape reflection...and the plunger holds its door-blocking position.

HatchLatch® Assy Kit

MEGA Stock Code: A835A4

Photoeyes mounted on the car signal a solenoid to "pick" a metal plunger and allow free door movement only when the car is safely inside a landing zone



Note: Product photos are for reference only.



HatchLatch® Identification Component Guide

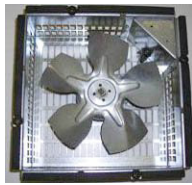
Call out	MEGA Stock Code	Description
A	A835RPLBOX	EDR ASS'Y w/Box (includes Battery)
B	A835R2	Reflective Tape, 2" x 10 ft (for up to 5 floors)
C	A835HKA3	Hard Ware Kit
D	A835SYSBK	Solenoid w/9ft cable and Z bracket
E	A835PH	Photoeye w/bracket and 9ft cable
F	A835RA	Reflective Angle
G	A835BB	Bracket, 7 GA x 5" x 10"

Replacement Parts and Accessories

Call out	MEGA Stock Code	Description
1	A835MC	Hatch Latch "Money Clip"
2	A835R2P	Reflective Tape, 2" x 150 ft (for up to 75 floors)
3	A835S1	Solenoid w/ 9 ft cable
4	A835PL	Plunger for Solenoid
5	A835 DC	Dust cap for Solenoid plunger – yellow
6	A835PH – BTK	Bracket (for Photoeye)
7	A835SBA3	Solenoid Mounting bracket
8	A835ZC	Solenoid Plunger "Z" bracket
9	PS1250-F1	Battery
-	A835XF	Hatch Latch Transformer (inside box, not shown)

Car Top Fans

MEGA Stock Code	For Use on Cables	CFM	Voltage	Dimension
X2SQ	Two speed	300-345	115 VAC, 60 Hz	12" Dia and 4.25" H
MVS-12	Two speed	250-300	115 VAC, 60 Hz	12" Dia and 5.70" H
MVS-14	Two speed	250-300	115 VAC, 60 Hz	14" Dia and 5.70" H
MVS-OE	Three speed	400-515	115 VAC, 60 Hz	15.60" Dia and 7.10" H
MVS-AA	Three speed	450-700	115 VAC, 60 Hz	21.5"L x 16.6"W x 18.5" H



X2SQ



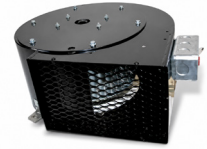
MVS-12



MVS-14



MVS-OE



MVS-AA

Fan Grilles

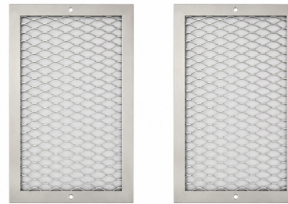
MEGA Stock Code	Hole Cutout	Overall Dia	Application
FG-12-S	9 3/4" D	13 15/16" D	For use with MVS [®] -12
FG-14-S	11 3/4" D	15 15/16" D	For use with MVS-14 and MVS-OE
FG-AA-S	6" x 10 5/8"	7 3/8" x 12"	For use with MVS-AA (2 grilles needed per MVS-AA)



FG-12-S



FG-14-S



FG-AA-S

Note: Product photos are for reference only.

Inspection Station

Designed to meet ANSI A17.1 Elevator Safety Code Requirements. All models have pre-drilled mounting brackets with ceramic incandescent light bulb socket. Up and down buttons have 2 NO contacts for universal compatibility. Safe button has 1 NO contact. CSA approved.

MEGA Stock Code: TCIG

- Fire service buzzer and jewel, 115v AC
- 3 prong electrical cord outlet
- Ground Fault Circuit Interrupter



TCIG

MEGA Stock Code: TCIG-A

- Fire service buzzer and jewel, 115v AC
- 3 prong electrical cord outlet
- Ground Fault Circuit Interrupter (GFCI)
- 6 Volt Alarm Bell Mounted



TCIG-A

MEGA Stock Code: TCIG-A24

- Fire service buzzer and jewel, 115v AC
- 3 prong electrical cord outlet
- Ground Fault Circuit Interrupter (GFCI)
- 6 Volt Alarm Bell Mounted



TCIG-A24

MEGA Stock Code: TCIG-4X

- NEMA 4X
- GFCI Outlet
- 24 VDC Fire Service



TCIG-4X

MEGA Stock Code: GMS312

- 1 LED lamp – 12W 1000 Lumen 120V
- 1 Common push button – 1NO
- 1 Red LED Pilot Light – AC/DC 24V
- 1 GFCI socket 15A – 125V
- 1 Yellow LED Pilot Light – AC/DC 24V
- 1 Buzzer 30-120 VAC
- 1 Emergency Stop Switch – 2 PCW010SS (Self monitored contacts) + 1NO
- 1 Cam Switch 0-1 Normal – Inspection 90° switching – 2NO + 2NC
- 1 Stopping closing holes
- 1 Knob Selector 0-1 – 1NO
- 1 Up Push Button – 1NO
- 1 Down Push Button – 1NO



GMS312

Note: Product photos are for reference only.